



University of the Ryukyus Guidebook 2019 - 2020



Island wisdom, for the world, for the future.

Located in Okinawa, a part of the Ryukyu Islands, University of the Ryukyus (Ryudai) boasts unique characteristics that no other university in Japan has. On top of the list of assets that Ryudai enjoys is its subtropical location with a beautiful natural environment both on the land and in the sea.

I personally invite you to come and see for yourself the many things the University of the Ryukyus has to offer.



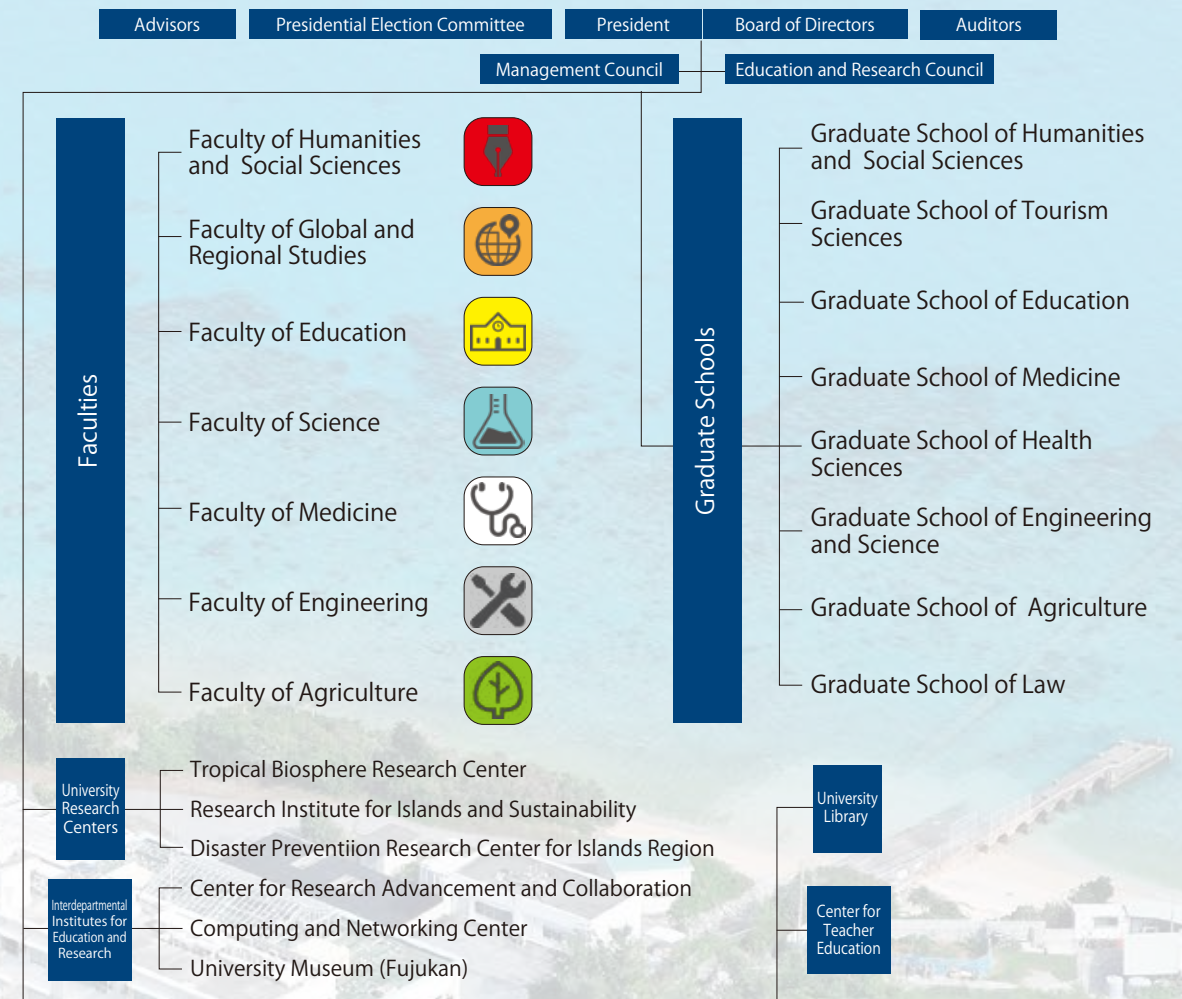
NISHIDA Mutsumi
President
University of the Ryukyus

西田睦

Read More



Organizational Chart



What international students are saying

“The University of the Ryukyus has some of the best friendliest teachers, professors, and students to aid my climb to success.”



“I chose to study in Okinawa because I wanted to try the unique food culture and see the clear blue waters for myself.”



“If you go to Okinawa, you will see beautiful landscapes. You will meet a lot of new friends and also you can contrast the difference between Japanese culture and Okinawan culture.”



“I have also discovered my future here, not only have I found my academic calling.”



“Apart from classroom time, we get to go on several excursions and enjoy first-hand experiences of Okinawa culture. I particularly loved the Okinawa craft workshop!”



“Everybody in Okinawa is very friendly. It’s the perfect place to become better at speaking Japanese.”



“My study abroad experience at the University of the Ryukyus will stay with me for the rest of my life.”



“Classes are difficult mainly in Japanese, but if you do your best, it's okay. It is important to go out to the outside world. I highly recommend it.”

Undergraduate student from Micronesia



● Monthly living expenses

Dormitory Rent :	¥ 16,500
Water :	¥ 1,000
Electric :	¥ 1,500
Gas :	¥ 1,500
Food :	¥ 20,000
Total :	¥ 40,500

Scholarship : ¥ 100,000

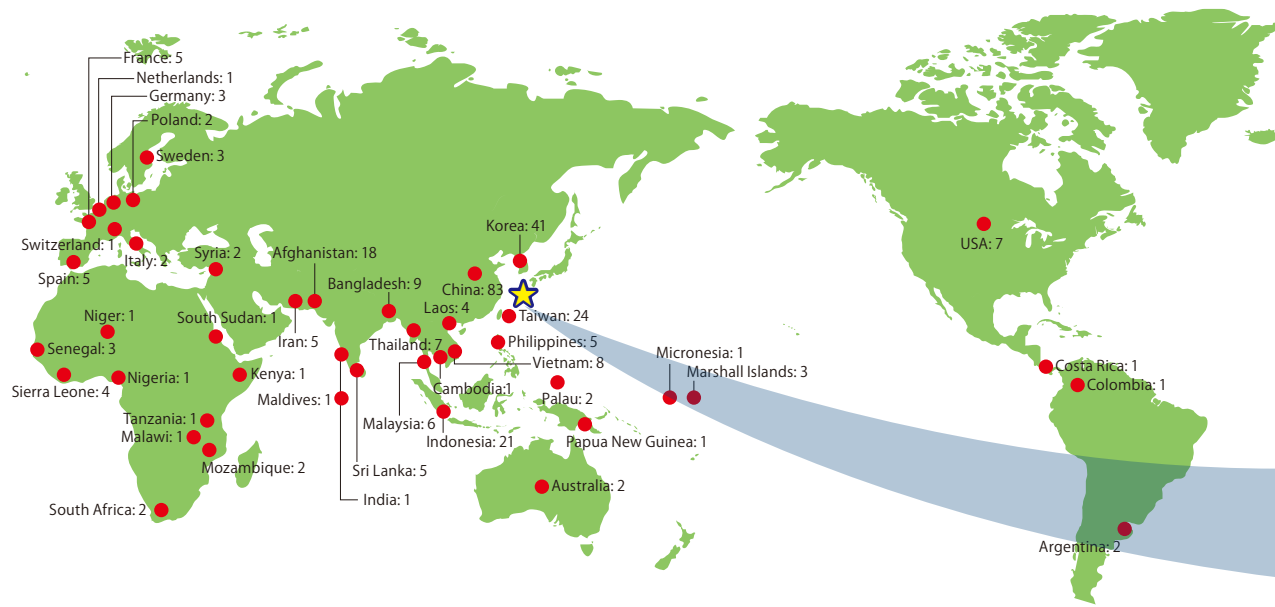


Timetable (Example: Short-Term Exchange Student)

	Mon.	Tue.	Wed.	Thu.	Fri.
1					Readings in Japanese Literary Works/Literature
2	International Affairs	Geography of the Ryukyu Islands		Okinawan History	
3		Japanese Culture	Study of Ryukyuan Culture	Writing in Japanese	
4	Business Japanese				
5		Oral Expression			Seminar on Global Engagement

Number of international students by country/region (as of May 1, 2019)

300 students from 40 countries/regions.



■ Sesoko Station



■ Experimental forest



■ Yona Station

Tropical Biosphere Research Center Sesoko Station

Subtropical Field Science Center (Yona Field)

Tropical Biosphere Research Center Iriomote Station



■ University of the Ryukyus (Main campus)



University of the Ryukyus Hospital



■ Coral Reefs Research



■ The mangrove forest of Iriomote Island is the largest in Japan



■ Iriomote Station

Offices Outside Okinawa and Overseas



■ Taipei Satellite Office



■ Laos Satellite Office



■ Hawaii Liaison Office



■ Tokyo Office

■ Brazil Satellite Office
■ Germany Satellite Office



The University of the Ryukyus President's Research Award for Leading Scientists

The University of the Ryukyus is leading an initiative in the "Spearheads of Research" to promote four of the University's key areas of research: Tropics and Sub-Tropics, Island and Ocean Environments, Ryukyu and Okinawa Culture, and Health, Longevity and Internationally Infectious Diseases.

This is in addition to a model of community-based problem solving, an approach to issue resolution gleaned from results of an institutionally-organized survey of research requirements.

Coral Reefs

How will corals in the Ryukyu archipelago respond to climate change?



Prof. SAKAI Kazuhiko

Invasive Non-Native Organisms

Advanced research on invasive non-native living organisms in the face of climate change and ever-transforming conditions of the natural environment.



Prof. TSUJI Mizuki

Cultural Diversity

Towards the construction of dynamic systems of taxonomy for languages in the Ryukyus.



Prof. KARIMATA Shigehisa

Regional Development

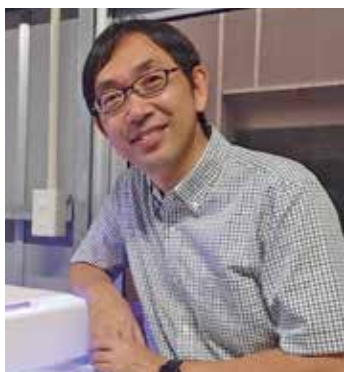
Towards Creating a Flexible and Strong Region: Integrated management of land resources development and use in urban and rural settings.



Prof. NAKAMURA Shinya

Marine Organisms

Environmental adaptability of coral reef organisms – An overall understanding from biological perspectives.



Prof. TAKEMURA Akihiro

Renewable Energy

Approaches for the realization of a sustainable society – Proactive use of renewable sources of energy.



Prof. SENJYU Tomonobu

University of the Ryukyus by the Numbers

(As of May 1, 2019)

•Faculties

7 faculties 32 programs

•Graduate Schools

9 graduate schools 23 programs

•Students

8,079
 7,140 Undergraduate students
 530 Graduate students
 (Master's and Predoctoral courses)
 330 Graduate students
 (Doctorate and Doctoral courses)
 79 Professional degree students

•Student-Teacher ratio

8,079 / 826 = 9.78

•International Exchanges

Number of universities/institutions with
 116 schools 40 countries/regions

Student exchanges with partner universities

79 students received

33 students sent

Faculty exchanges

Faculty members conducting research abroad

595

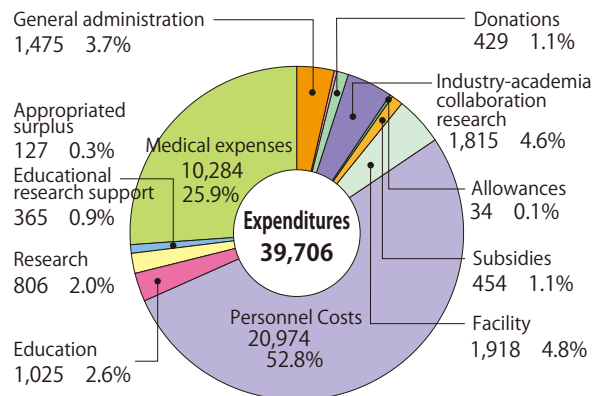
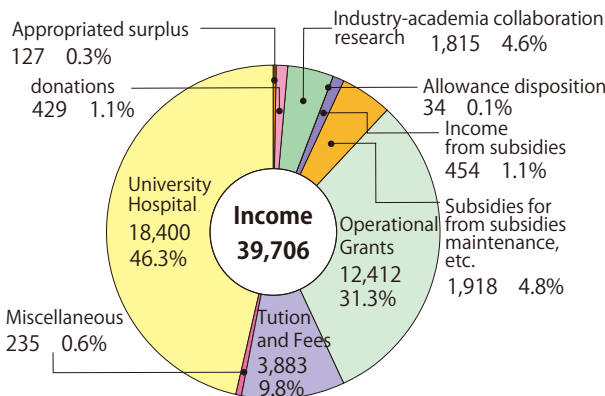
Researchers from overseas received

220

International students

300

•Budget (Unit: Million JPY)



The Times Higher Education Japan
 University Rankings 2019 (3.27.2019)

89th / the top 150 universities